

## ARRI X 12

Please click here to get a Lighting service contact overview:

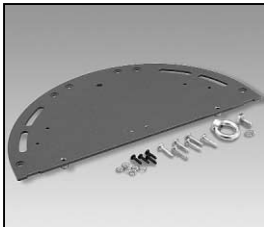
Klicken Sie bitte hier um eine Übersicht unserer Service-Kontakte zu erhalten :

[www.arri.de](http://www.arri.de)

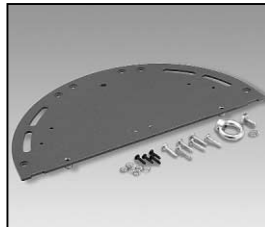


04 - 2009

**NOTE: WHEN ORDERING QUOTE PART NUMBER    BEMERKUNG: BEI BESTELLUNG IDENT.-NR. ANGEBEN**



**L4.82479.E**  
Cover plate to ser. no. 250  
Deckplatte bis Ser. Nr. 250



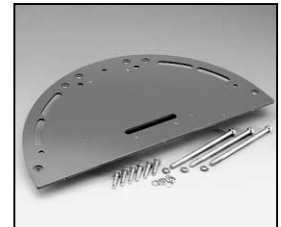
**L4.82753.E**  
Cover plate from ser. no. 251  
Deckplatte ab Ser. Nr. 251



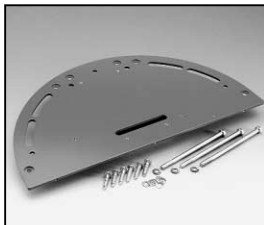
**L4.82480.E**  
Intermediate plate to ser. no. 250  
Zwischenplatte bis Ser. Nr. 250



**L4.82754.E**  
Intermediate plate from ser. no. 251  
Zwischenplatte ab Ser. Nr. 251



**L4.82478.E**  
Bottom plate to ser. no. 250  
Bodenplatte is Ser. Nr. 250



**L4.82752.E**  
Bottom plate from ser. no. 251  
Bodenplatte ab Ser. Nr. 251



**L4.82116.E**  
Top latch compl.  
Torsicherung kpl.



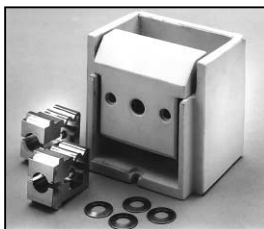
**L4.82760.E**  
Lampholder + lampholder support  
Lampenfassung + Fassungsträger



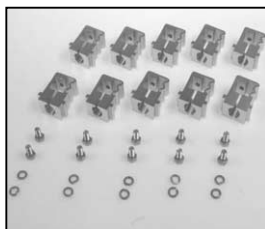
**L4.82492.E**  
Lampholder support  
Fassungsträger



**L4.73540.E**  
Lamp lock shaft  
Hebel geschweißt



**L4.73533.E**  
Lampholder  
Lampenfassung



**L4.80115.E**  
Set of 10 pcs. lampholder  
contacts  
Set mit 10 st.  
Lampenfassungskontakten



**L4.82761.E**  
Safety switch cpl. to ser. no. 250  
Endschalter kpl. bis Ser. Nr. 250



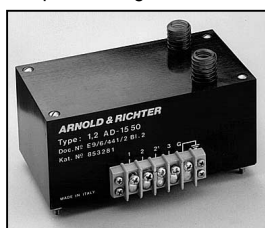
**L4.82741.E**  
Safety switch cpl. from Ser-# 251  
to 453  
Endschalter kpl. von Ser-# 251  
bis 453



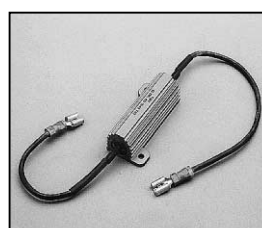
**L4.83508.E**  
Safety switch cpl. from Ser-# 454  
Endschalter kpl. von Ser-# 454



**L4.87769.E**  
Single Safety switch  
Single Endschalter



**L4.77530.E**  
Ignitor  
Zündgerät



**L4.73455.E** Compensating  
resistance for electronic hour counter  
Vorwiderstand für elektr. Betriebs-  
stundenzähler



**L4.82491.E**  
Base skid  
Kufe



**L4.82438.E**  
Lamplock switch activator  
(only up to ser. no. 250)  
Klinke (nur bis Ser. Nr. 250)



**L4.82476.E**  
Extrusion left to ser. no. 250  
Rippenblech links bis Ser. Nr. 250



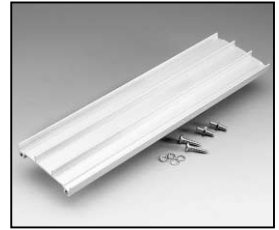
**L4.82731.E**  
Extrusion left from ser. no. 251  
Rippenblech links ab Ser. Nr. 251



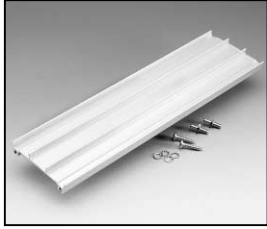
**L4.82477.E**  
Extrusion right to ser. no. 250  
Rippenblech rechts bis Ser. Nr. 250



**L4.82738.E**  
Extrusion right from ser. no. 251  
Rippenblech rechts ab Ser. Nr. 251



**L4.82475.E**  
Extrusion middle to ser. no. 250  
Rippenblech mitte bis Ser. Nr. 250



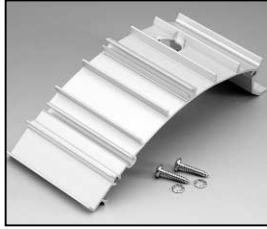
**L4.82739.E**  
Extrusion middle from ser. no. 251  
Rippenblech mitte ab Ser. Nr. 251



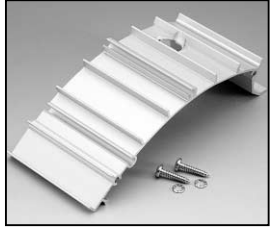
**L4.82473.E**  
Insert section left & right  
to ser. no. 250  
Einschubprofil links & rechts  
bis Ser. Nr. 250



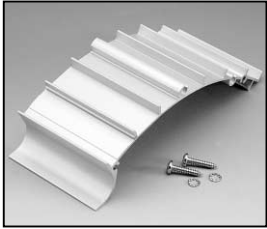
**L4.82735.E**  
Insert section left & right  
from ser. no. 251  
Einschubprofil links & rechts  
ab Ser. Nr. 251



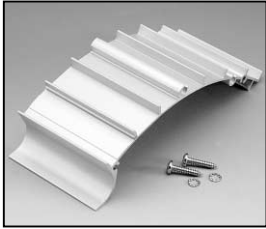
**L4.82483.E**  
Bottom extrusion left  
to ser. no. 250  
Rippenblech unten links  
bis Ser. Nr. 250



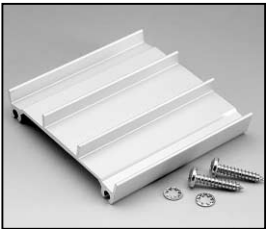
**L4.82744.E**  
Bottom extrusion left  
from ser. no. 251  
Rippenblech unten links  
ab Ser. Nr. 251



**L4.82484.E**  
Bottom extrusion right  
to ser. no. 250  
Rippenblech unten rechts  
bis Ser. Nr. 250



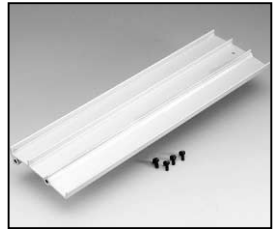
**L4.82745.E**  
Bottom extrusion right  
from ser. no. 251  
Rippenblech unten rechts  
ab Ser. Nr. 251



**L4.82482.E**  
Bottom extrusion middle  
to ser. no. 250  
Rippenblech unten mitte  
bis Ser. Nr. 250



**L4.82746.E**  
Bottom extrusion middle  
from ser. no. 251  
Rippenblech unten mitte  
ab Ser. Nr. 251



**L4.82472.E**  
Internal baffle  
(only up to ser. no. 250)  
Mantelstromblech  
(nur bis Ser. Nr. 250)



**L4.82780.E**  
Mains cable (Veam)  
Scheinwerferkabel (Veam)



**L4.82782.E**  
Mains cable (Schaltbau)  
ARRI Norm w.o. coupling ring  
Scheinwerferkabel (Schaltbau)  
ARRI Norm ohne Überwurfmutter



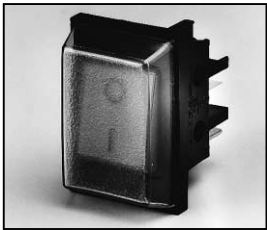
**L4.82784.E** Mains cable  
with coupling ring (Schaltbau)  
German TV norm  
Scheinwerferkabel mit Überwurfmutter  
(Schaltbau Fernsehnorm)



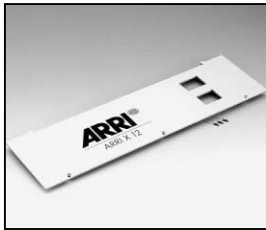
**L4.82762.E**  
Connecting wire  
Verbindungslitzen



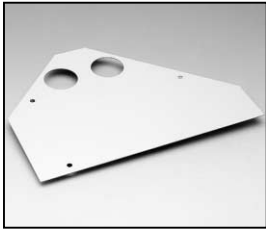
**L4.73579.E**  
H.T. cables complete  
Lampenkabel komplett



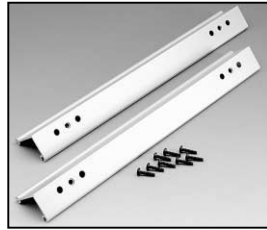
**L4.72826.E**  
On/Off switch  
Wippschalter



**L4.82481.E**  
Front plate  
Frontplatte



**L4.82485.E**  
Cover  
Abdeckblech



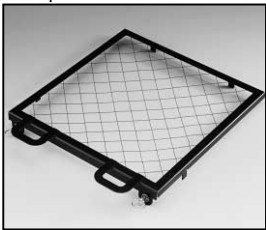
**L4.82471.E**  
Reflectorholder to ser. no. 250  
Reflektorhalter bis Ser. Nr. 250



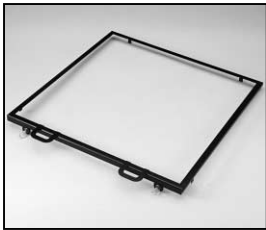
**L4.82734.E**  
Reflectorholder from ser. no. 251  
Reflektorhalter ab Ser. Nr. 251



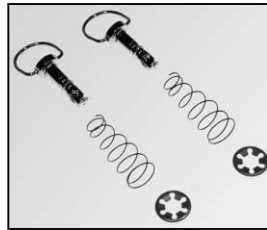
**L4.82259.E**  
Reflector  
Reflektor



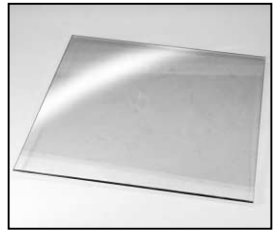
**L4.82494.E**  
Wire guard (only up to ser. no. 250)  
Schutzgitter (nur bis Ser. Nr. 250)



**L4.82763.E**  
Frame  
(only up from ser. no. 251)  
Rahmen (nur ab Ser. Nr. 251)



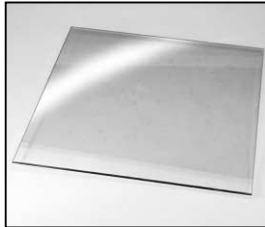
**L4.83265.E**  
Fast lock  
Schnellverschluss



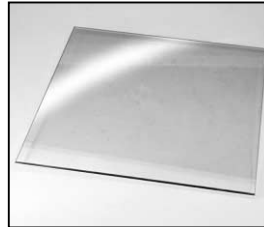
**L4.82493.E**  
UV-protection glass clear 5mm,  
to ser. no. 250,  
just for use with wire guard  
UV-Schutzscheibe klar 5mm,  
bis Ser. Nr. 250,  
nur mit Schutzgitter zu verwenden



**L4.82764.E**  
UV protection glass clear 2,75 mm from ser-# 251  
UV Schutzglas klar 2,75 mm ab Ser-# 251



**L4.82764XE**  
Protection glass clear 2,75 mm from ser-# 251, for use with UV protection glass L4.82764.E  
Schutzglas klar 2,75 mm ab Ser-# 251, zum Gebrauch mit UV-Schutzglas L4.82764.E



**L4.82256.E**  
UV Protection glass frosted 5mm to ser.no. 250  
UV Schutzglas gefrostet 5mm bis Ser-# 250



**L4.82768.E**  
Protection glass frosted 2,75 mm from ser-# 251 for use with UV protection glass L4.82764.E  
Schutzglas gefrostet 2,75 mm ab Ser-# 251, zum Gebrauch mit UV-Schutzglas L4.82764.E



**L4.77390.E**  
Stirrup to ser. no. 250  
Haltebügel bis Ser. Nr. 250



**L4.82767.E**  
Stirrup from ser. no. 251  
Haltebügel ab Ser. Nr. 251



**L4.82470.E**  
Stirrup bracket to ser. no. 250  
Bügellager bis Ser. Nr. 250



**L4.82496.E**  
Stirrup bracket from ser. no. 251  
Bügellager ab Ser. Nr. 251



**L4.73746.E**  
Stirrup mounting set to ser. no. 250  
Bügelbefestigungs-Set bis Ser. Nr. 250



**L4.82737.E**  
Stirrup mounting set from ser. no. 251  
Bügelbefestigungs-Set ab Ser. Nr. 251



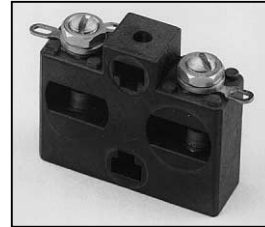
**L4.79855.E**  
Cable tie  
Halteleine



**L4.77678.E**  
Hour counter elec.  
Betriebsstundenzähler elektr.



**L4.73474.E**  
Screw-type conduit fitting  
Kabelverschraubung



**L4.75788.E**  
Spark gap  
Funkenstrecke



**L4.71874.E**  
Veam connector (male)  
Veam Stecker (Stiftkontakt)



**L4.71876.E**  
Veam connector (female)  
Veam Stecker Buchsenkontakt



**L4.75602.E**  
Schaltbau connector (male) with coupling ring  
Schaltbau Stecker (Stiftkontakt) mit Überwurfmutter



**L4.75603.E**  
Schaltbau connector (female) without coupling ring  
Schaltbau Stecker (Buchsenkontakt) ohne Überwurfmutter



**L4.75604.E**  
Schaltbau connector (female) with coupling ring  
Schaltbau Stecker (Buchsenkontakt) mit Überwurfmutter



**L4.75605.E**  
Schaltbau connector (male) without coupling ring  
Schaltbau Stecker (Stiftkontakt) ohne Überwurfmutter



**L4.83153.E**  
Friction disc to ser. no. 250  
Friktionsscheibe bis Ser. Nr. 250



**L4.79128.E**  
Friction disc from ser. no. 251  
Friktionsscheibe ab Ser. Nr. 251



**L4.70194.E**  
Paint blue similar RAL 5015  
Lack blau ähnlich RAL 5015



**L4.70186.E**  
Paint thinner  
Farb-Verdünnung