

ARRI 1000 PLUS p.o.

Please click here to get a Lighting service contact overview:

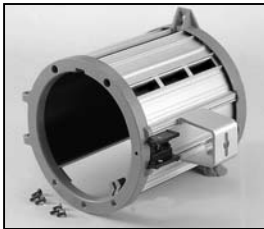
Klicken Sie bitte hier um eine Übersicht unserer Service-Kontakte zu erhalten :

www.arri.de

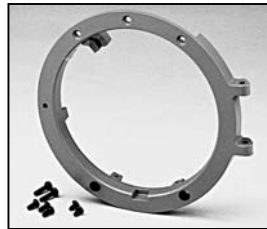


04 - 2009

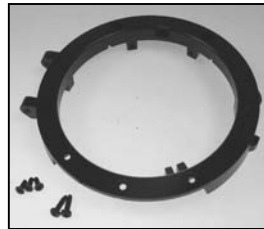
NOTE: WHEN ORDERING QUOTE PART NUMBER BEMERKUNG: BEI BESTELLUNG IDENT.-NR. ANGEBEN



L4.79657.E
Housing cpl. blue/silver
Gehäuse kpl. blau/silber



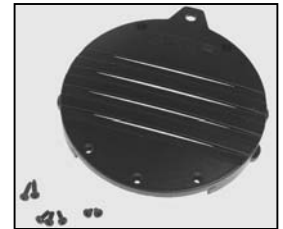
L4.79687.E
Front casting blue
Frontteil blau



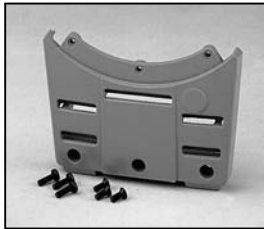
L4.79687XE
Front casting black
Frontteil schwarz



L4.79688.E
Rear casting blue
Rückteil blau



L4.79688XE
Rear casting black
Rückteil schwarz



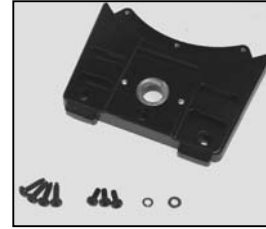
L4.79640.E
Base casting front blue
Wannenstirnteil vorn blau



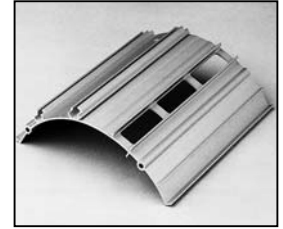
L4.79640XE
Base casting front black
Wannenstirnteil vorn schwarz



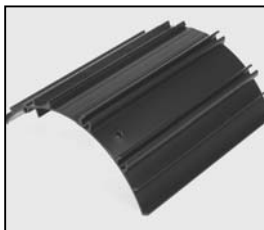
L4.79778.E
Base casting rear p.o. blue
Wannenstirnteil hinten p.o. blau



L4.79778XE
Base casting rear p.o. black
Wannenstirnteil hinten p.o. schwarz



L4.79625.E
Extrusion silver (NRTL-labeled from ser.no.2261 on request)
Rippenblech silver (NRTL-labeled ab Ser.Nr.2261 auf Anfrage)



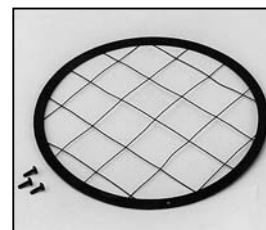
L4.79625XE
Extrusion black (NRTL-labeled from ser.no.2261 on request)
Rippenblech schwarz (NRTL-labeled ab Ser.Nr.2261 auf Anfrage)



L4.79630.E
Lens door
Linsenfassung



L4.79572.E
Fresnel lens
Stufenlinse



L4.79728.E
Wire guard
Schutzgitter



L4.73796.E
Top latch
Torsicherung



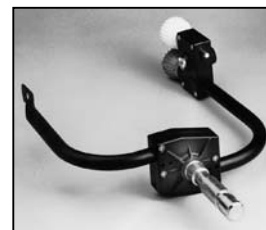
L4.79744.E
Accessory bracket
Halteklau



L4.79633.E
Lens retaining bracket
Halteklammer



L4.79747.E
Door catch
Schnapphaken



L4.83137.E
Stirrup p.o.
Haltebügel p.o.



L4.85103.E
Worm gear
Schneckenantrieb
further p.o.-spare-parts on separate sheet
weitere p.o. Ersatzteile auf separatem Blatt



L4.79666.E
Stirrup mounting set p.o.
Bügelbefestigungs-Set p.o.



L4.79777.E
Stirrup bracket p.o.
Bügelhalter p.o.



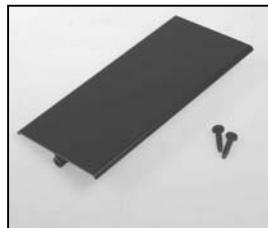
L4.79652.E
Set of side panels p.o. silver
Set Seitenbleche p.o. silber



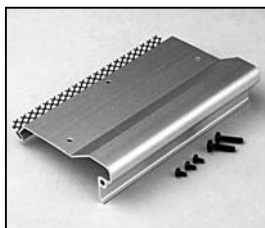
L4.79652XE
Set of side panels p.o. black
Set Seitenbleche p.o. schwarz



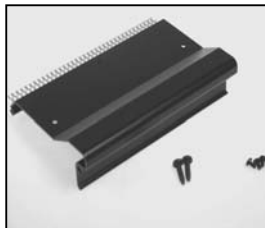
L4.79643.E
Base panel silver
Bodenblech silber



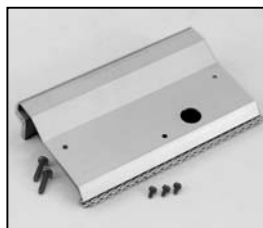
L4.79643XE
Base panel black
Bodenblech schwarz



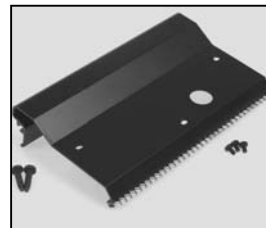
L4.79644.E
Side baffle left silver
Abdeckung seitlich links silber



L4.79644XE
Side baffle left black
Abdeckung seitlich links schwarz



L4.79649.E
Side baffle right silver
Abdeckung seitlich rechts silber



L4.79649XE
Side baffle right black
Abdeckung seitlich rechts schwarz



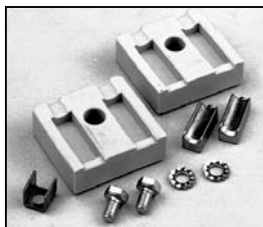
L4.79622.E
Internal baffle
Mantelstromblech



L4.79654.E
Lamp holder + lamp carriage compl.
Lampenfassung
+ Fassungsträger kpl.



L4.79658.E
Lamp lock shaft
Hebel geschweißt



L4.79695.E
Lamp holder
Lampenfassung



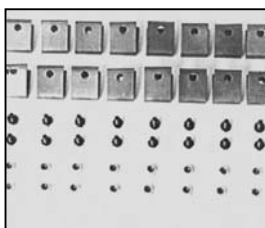
L4.79441.E
Reflector
Reflektor



L4.79650.E
Focus spindle compl.
Fokusspindel kpl.



L4.79647.E
Focus support rods
Gleitstange



L4.77160.E
Hinge-set for barndoor
Befestigungs-Set für Flügeltor



L4.79756.E
Focus drive compl. p.o.
Fokusantrieb kpl. p.o.



L4.83134.E
Switch p.o.
Schalter p.o.



L4.83129.E
Housing for switch p.o.
Gehäuse für Schalter p.o.



L4.83034.E
Focus knob set p.o.
(red, white, blue, yellow)
Fokusknopf-Set p.o.
(rot, weiß, blau, gelb)



L4.79646.E
Cable set inside p.o.
Kabel-Set innen p.o.



L4.83172.E
Mains cable 100-240 V p.o.
Netzkaabel 100-240 V p.o.



L4.70194.E
Paint blue similar RAL 5015
Lack blau ähnlich RAL 5015



L4.70183.E
Paint black similar RAL 9011
Lack schwarz ähnlich RAL 9011



L4.70186.E
Paint thinner
Farb-Verdünnung