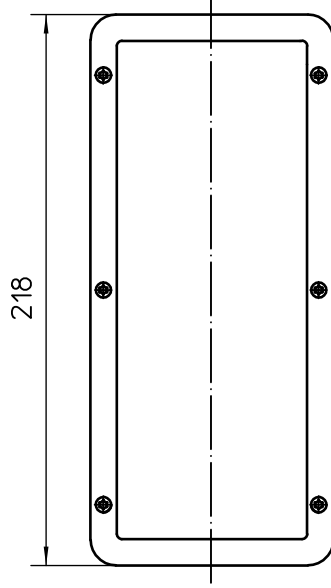
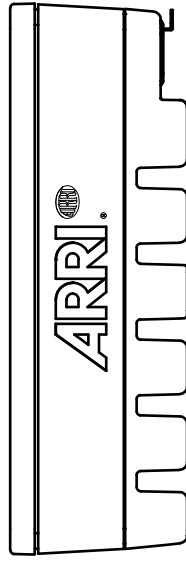
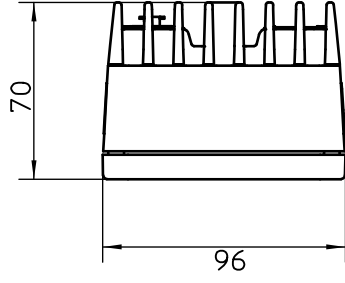
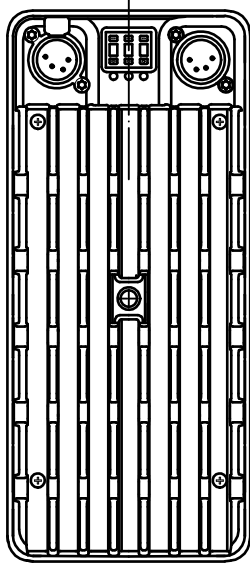
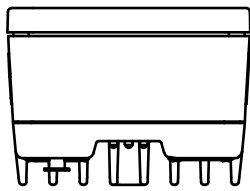
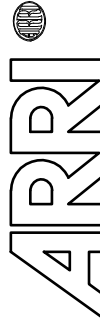


Schutzvermerk nach DIN34 beachten



Scheinwerfertyp type of lamphead	BroadCaster	Packmass packed size	235x115x80(LxBxH)mm	Ident Nr.:	L1.30090.0		Packgewicht	
Leuchtmittel lamp	ARRI LED-Engine	Packvolumen packed volume	-	kg.	1,09	kg.	-	lbs.
Lampensockel lamp base	-	Linse lenses	spezieller Optikaufbau	lbs.	-	lbs.	-	-
Zubehoer accessories	L2.30062.0 Intensifier L2.30059.0 Filterhalter	Dateiname file name	MB_3d_BroadCaster					
Fluegellor barndoor	L2.30061.0	Version / Stand version / as at...	1.0/14.07.09					



Arnold & Richter Cine Technik
Pulvermuehle
D-83071 Stephanskirchen