



# ARRI®

ARRI X CERAMIC 250  
ARRI STUDIO CERAMIC 250



# CERAMIC

- 4000 hrs lamp life
- Cool Operation
- 3200 K / CRI >90
- Very high efficiency 85lm/W
- 250W / 90-265VAC / 50-60Hz
- Hot Restrike
- Built-In Ballast
- Flicker Free (90Hz)
- Noiseless

The new ARRI X Ceramic 250 and Studio Ceramic 250 use the Phillips ST 250 HR discharge lamp producing 3200K Tungsten quality light in a long life, high efficiency package.

**The Studio Ceramic 250** uses the housing and all accessories of the popular ARRI Studio 1K Fresnel. The 7" (175mm) lens produces a smooth even field with a beam angle of 10° in spot and 57° in flood.

**ARRI X** reflector technology and a frosted diffusion glass provide excellent light distribution over a 112° field. The addition of ARRI's specular intensifier and a Chimera diffusion screen turns the ARRI X Ceramic 250 into a powerful

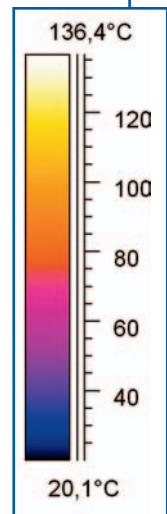
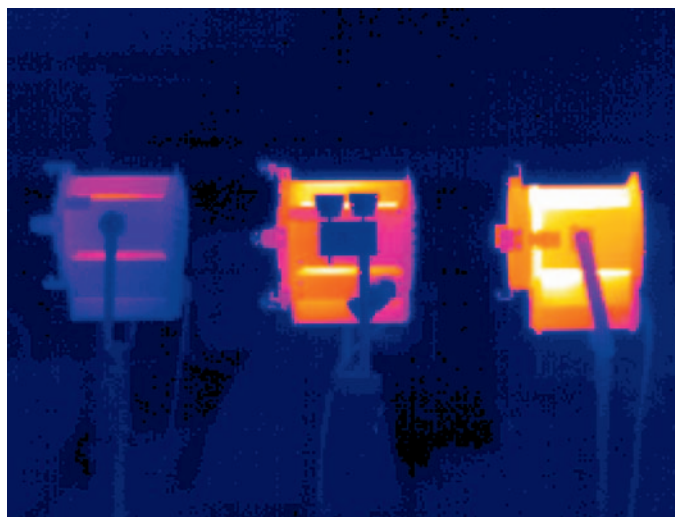
softlight - The output of a 2000W Softlight from only 250 watts!

Low power and high efficiency offer cost savings on both power consumption and air conditioning. The long life 4000 hour lamp saves substantially over maintenance costs on tungsten lamps. At only 250W, ARRI Ceramic fixtures produce significantly less heat than a tungsten fixture and are cool to the touch even in today's 24/7 operating environments.

Both the ARRI X Ceramic and the Studio Ceramic use a built in igniter and ballast and can be plugged directly into power consuming less than 3 amps at 120V.

## SURFACE TEMPERATURE COMPARISON

ARRI Studio Ceramic 250 / Studio 1000 / ARRI 1000 PLUS





#### ARRI X Ceramic 250 (includes lamp and frosted glass)

- 539400 ARRI X Ceramic 250, stand model
- 539401 ARRI X Ceramic 250, hanging model
- 539402 ARRI X Ceramic 250, stand model, black
- 239403 ARRI X Ceramic 250, hanging model, black
- 539420 Filter Frame
- 505410 Barndoor
- 539421 Clear Safety Glass
- 539422 Egg Crate, Black
- 539423 Egg Crate, White
- 539425 Intensifier
- 539426 Chimera 1/4 Diffusion Screen
- 539427 Chimera 50° Soft Eggcrate
- 539430 Snoot
- 539440 250W Ceramic Lamp (spare)

#### Specifications

Weight: 18lbs. (8.2kg)






Lampholder: GZY 9.5

Mounting: 5/8" (16mm) stand mount or hanging model w/c-clamp

Input Voltage Range: 90-265V 50/60Hz





ARRI Ceramic fixtures feature an integrated igniter/ballast.

### ARRI X Ceramic 250 with frosted glass

Measurement distance: <b>10 ft / 3 m</b>					
Accessories		Intensifier	Intensifier, 1/2 diffusion	Intensifier, 1/4 diffusion	Intensifier, 1/4 diffusion, 50° fabric grid
Illuminance [fc / lux]	45 fc / 485 lx	168 fc / 1795 lx	41 fc / 440 lx	67 fc / 715 lx	58 fc / 625 lx
Beam angle [°]	112°	47°	69°	60°	41°

### ARRI X Ceramic 250 with optional clear glass



Measurement distance: <b>10 ft / 3 m</b>				
Accessories		Intensifier, 1/2 diffusion	Intensifier, 1/4 diffusion	Intensifier, 1/4 diffusion, 50° fabric grid
Illuminance [fc / lux]	42 fc / 450 lx	50 fc / 531 lx	79 fc / 850 lx	72 fc / 772 lx
Beam angle [°]	122°	66°	59°	40°



### ARRI STUDIO Ceramic 250 (includes lamp)

- 539500 Studio Ceramic 250, stand model, 7" lens
- 539501 Studio Ceramic 250, hanging model
- 539502 Studio Ceramic 250, stand model, black
- 539503 Studio Ceramic 250, hanging model
- 531210 Four Leaf Barndoor
- 531215 Eight Leaf Barndoor
- 531220 Filter Frame
- 531230 Snoot
- 531250 9" Full Single Scrim
- 531251 9" Half Single Scrim
- 531252 9" Full Double Scrim
- 531253 9" Half Double Scrim
- 571714 Scrim Bag
- 539440 250W Ceramic Lamp (spare)
- 853276 Safety Cable



### Specifications

Weight: 18.5lbs. (8.4kg)

Lampholder : GZY 9.5

Mounting: 5/8" (16mm) stand mount or hanging model w/c-clamp

Input Voltage Range: 90-265V 50/60Hz

ARRI Ceramic fixtures feature an integrated igniter/ballast.

## PHOTOMETRIC DATA

DISTANCE	5 ft. (1.5m)	10 ft. (3.0m)	15 ft. (4.6m)	20 ft. (6.1m)
Spot Focus beam angle 10°				
Footcandles	2699	675	300	169
Beam Diameter	.9 ft. (0.27m)	1.8 ft. (0.55m)	2.6 ft. (0.8m)	3.5 ft. (1.1m)
Flood Focus beam angle 57°				
Footcandles	388	97	43	25
Beam Diameter	5.5 ft. (1.7m)	10.9 ft. (3.3m)	16.3 ft. (5.0m)	21.7 ft. (6.6m)

### Spot Performance at any distance:

Footcandles (or lux) =  $67,500 \div \text{Distance}^2$  | Beam Diameter = Distance x 0.18

### Flood Performance at any distance:

Footcandles (or lux) =  $9,700 \div \text{Distance}^2$  | Beam Diameter = Distance x 1.00



ARRI INC.

617 ROUTE 303, BLAUVELT, NY 10913-1109 • PH: (845) 353.1400 • FX: (845) 425.1250  
600 N. VICTORY BLVD., BURBANK, CA 91502-1639 • PH: (818) 841-7070 • FX: (818) 848-4028

ait18105 4/2005 2.5M

www.arri.com